

Crown
Commercial
Service
Supplier

RM 3837

MAKING SPACES INTO **GOVERNMENT & PUBLIC** PLACES

www.forbo-flooring.co.uk/government

creating better environments

forbo
FLOORING SYSTEMS

EVERY SOLUTION. ONE SUPPLIER.

We like to think that the floor coverings that we design and manufacture provide an inspirational basis for interior design. We aim at helping you create inspiring and high performing interiors which leave lasting impressions.

With Forbo you get more than a floor.

OPEN AND HONEST ADVICE

As Forbo offers the largest and most comprehensive range of floor coverings, you can always rely on us to advise you openly and honestly on the best floor covering product, or combination of different products, to meet your requirements.

Our product offer is backed up by the reassurance that Forbo is the only flooring manufacturer on the **Crown Commercial Services framework agreement for 'Building Materials and Associated Services'** (RM 3837, Lot 7 – flooring and tiling).

ACCORDING TO CCS, BY USING THE FRAMEWORK, CUSTOMERS CAN BENEFIT FROM:

A lean procurement route to market

Compliance with EU procurement legislation

Process savings – allowing customers to concentrate on core activities

Discounted list prices ensuring value for money

JUST SOME OF THE PUBLIC SECTOR AND FACILITIES MANAGEMENT WHO WE WORK WITH:

HM Passport Office

Ministry of Defence

Department for Work & Pensions

Royal Air Force

Royal Navy

HMRC

Office of Rail and Road

Environment Agency

CONTENTS

INTRODUCING FORBO

4



Flooring requirements and solutions by area	04
Ranges to suit every area and budget	06
Improving facilities services across the public sector	07
Health and Wellbeing	08
Sustainability	10
Fast Fit	11
Keeping employees and visitors safe and sound	12
ProCure 22	13
BIM – Creating a digital built Britain	14
Floors that work together	15

OUR FLOOR COVERINGS IN USE

16



Urbanest	16
Zebra Technologies	16
Energy Systems Catapult	16
University of Winchester	17
Coleg Cambria	17
Croxteth Primary School	17
Estonian Museum of Natural History	18
Titanic Belfast	18
Unesco Biosphere Reserve Vessertal	18
The Glucksman Library	19
Edmonton Green Library	19
Chungnam Library	19
Donabate Library	19
BRAINLAB Munich	20
RENEX Electronics	20
Unisensor Laboratories	20
Egedal Town Hall	21
True Self Exhibition	21
Artevelde Hogeschool	21

FURTHER INFORMATION

22



Further information	22
The Next Steps	23

Crown
Commercial
Service
Supplier

PRO CURE
22

APUC
Advanced Procurement
for Universities & Colleges

FLOORING REQUIREMENTS AND SOLUTIONS BY AREA

CIRCULATION ZONES

- Heavy footfall
- Enhanced acoustics
- Easy to install and minimum downtime*

TEXTILE

Flotex flocked flooring – planks, tiles and sheet
Tessera carpet tiles and planks

RESILIENT

Modul'up adhesive free vinyl*
Sarlon acoustic
Eternal general purpose vinyl
Sphera homogeneous vinyl
Marmoleum linoleum
Tessera carpet tiles

BREAKOUT SPACES

- Design floor to inspire creativity

TEXTILE

Tessera carpet tiles and planks
Flotex flocked flooring – planks, tiles and sheet

RESILIENT

Bespoke printed vinyl or Flotex
Allura Flex luxury vinyl tiles
Marmoleum Modular tiles and planks

KITCHENS & TEA POINTS

- Safety flooring for commercial kitchens
- Ease of cleaning
- Reduce risk of slips
- Modular format to integrate with main floor area

TEXTILE

Flotex flocked flooring – planks, tiles and sheet

RESILIENT

Step safety vinyl
Allura Flex luxury vinyl tiles
Eternal general purpose vinyl

CANTEEN/RESTAURANT

- Safety floor for any splashes and spills
- Ease of cleaning

TEXTILE

Flotex flocked flooring – planks, tiles and sheet
RESILIENT
Allura luxury vinyl tiles
Step safety vinyl
Marmoleum linoleum
Eternal general purpose vinyl

ENTRANCE AREAS

- Reduce slips and trips at entrances
- Protect interior floor finishes

Coral entrance systems
Nuway entrance systems

TOILETS

- Safety flooring for washrooms or shower areas
- Protect against slips and trips

Step safety vinyl

MEETING ROOMS

- Flooring with enhanced acoustic properties
- Modular format for ease of installation and repair

TEXTILE

Tessera carpet tiles and planks
Flotex flocked flooring – planks and tiles

RESILIENT

Allura Flex luxury vinyl tiles
Allura Ease adhesive free luxury vinyl tiles

MAIN OFFICE AREAS

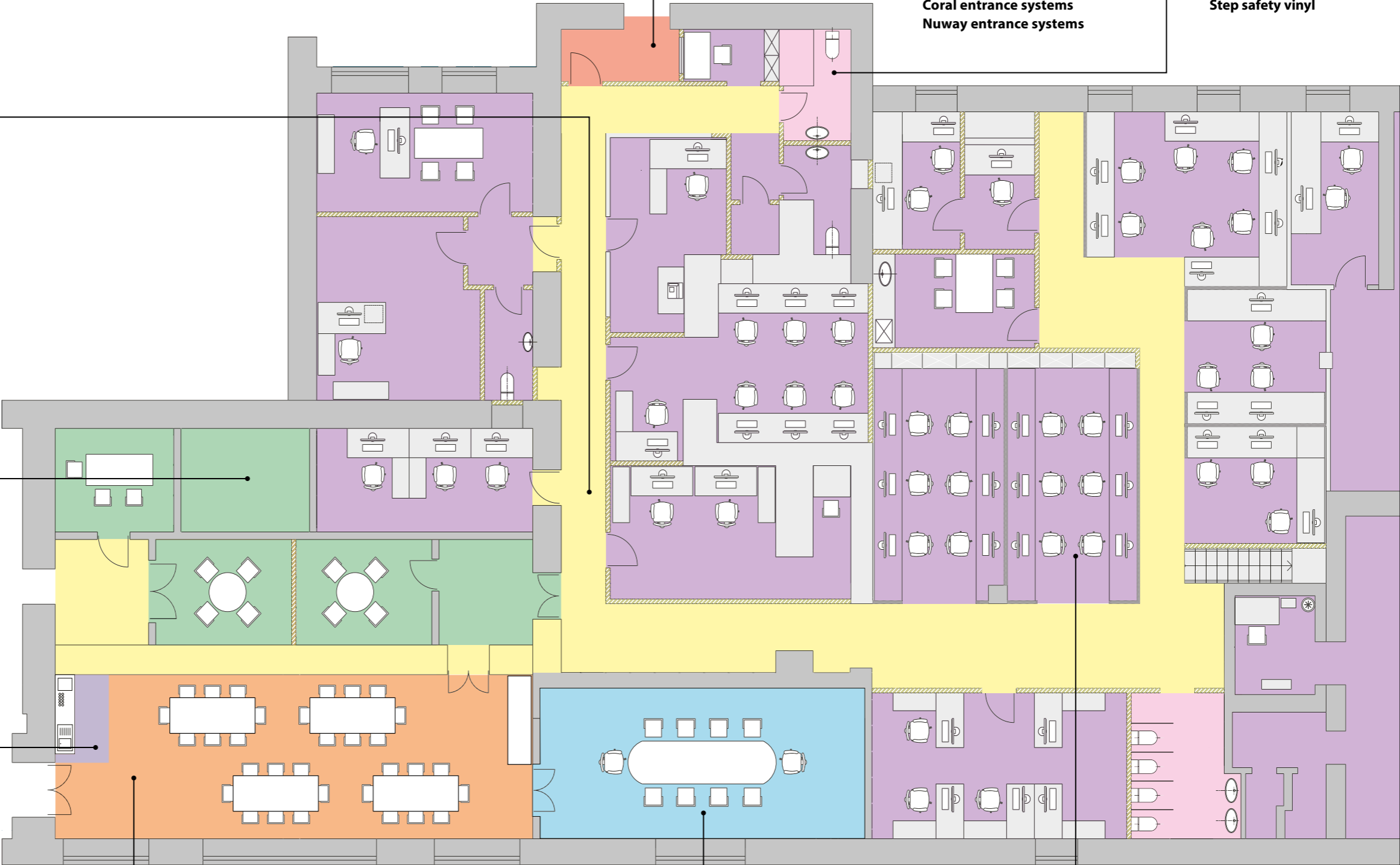
- Modular flooring, suitable for raised access floors
- Underfoot comfort and acoustics

TEXTILE

Tessera carpet tiles and planks
Flotex flocked flooring – planks and tiles

RESILIENT

Allura Flex luxury vinyl tiles
Allura Decibel luxury vinyl tiles



RANGES TO SUIT EVERY AREA AND BUDGET

AREA	BUDGET		BUDGET PLUS		PREMIUM	
	Range	Total thickness	Range	Total thickness	Range	Total thickness
ENTRANCE	Coral tiles	9.0 mm	Coral sheet	9.0 mm	Nuway	10 - 22 mm
RECEPTION/FOYER	Allura Dryback DR5	2.2 mm	Allura Dryback DR5	2.2 mm	Allura Dryback DR7	2.5 mm
	Flotex tiles	5.0 mm	Flotex Planks	5.0 mm	Flotex Planks	5.0 mm
	Eternal	2.0 mm	Eternal de Luxe	2.0 mm	Eternal De Luxe	2.0 mm
OFFICE	Tessera Create Space 1	5.5 mm	Tessera Create Space 2	5.7 mm	Tessera Alignment	6.2 mm
	Tessera Tevlot	5.7 mm	Tessera Mix	5.9 mm	Tessera Contour	6.3 mm
	Tessera Layout & Outline	5.8 mm	Tessera Diffusion	6.5 mm	Tessera Nexus	6.3 mm
	Tessera Layout & Outline planks	5.8 mm	Tessera Inline	6.5 mm	Tessera Seagrass planks	6.6 mm
	Tessera Barcode	6.0 mm	Tessera Cloudscape	7.2 mm	Tessera Earthscape	7.1 mm
					Tessera Arran	7.0 mm
					Tessera In-touch planks	7.4 mm
	Allura Dryback DR5	2.2 mm	Allura Flex FL5	4.0 mm	Allura Flex FL1	5.0 mm
	Flotex tiles	5.0 mm	Flotex Planks	5.0 mm	Flotex planks	5.0 mm
					Allura Ease	5.0 mm
MEETING ROOMS	Tessera Cloudscape	7.2 mm	Flotex Planks	5.0 mm	Tessera Alignment	6.2 mm
					Tessera Chroma	6.8 mm
					Allura Decibel	4.0 mm
HIGH TRAFFIC AREAS & CORRIDORS	Flotex tiles	5.0 mm	Flotex Planks	5.0 mm	Flotex Planks	5.0 mm
	Tessera	Various	Tessera	Various	Tessera	Various
TOILET & KITCHENS	Surestep/Safestep	2.0 mm	Surestep/Safestep	2.0 mm	Surestep digital print	2.0 mm
IT & ISO CLEAN ROOMS	Colorex SD/EC	2.0 mm	Colorex SD/EC	2.0 mm	Colorex SD/EC	2.0 mm
TEA POINTS	Allura Flex FL5	4.0 mm	Allura Flex FL1	5.0 mm	Allura Flex FL1	5.0 mm
DINING AREAS	Eternal/Eternal de Luxe	2.0 mm	Allura Flex FL5	4.0 mm	Allura Flex FL1	5.0 mm
	Allura Dryback DR5	2.2 mm	Allura Dryback DR5	2.2 mm	Allura Dryback DR7	2.5 mm
	Flotex sheet	4.3 mm	Flotex planks/tiles	5.0 mm	Flotex Planks	5.0 mm
	Surestep/Safestep	2.0 mm	Surestep/Safestep	2.0 mm	Surestep digital print	2.0 mm
WALLS & FURNITURE			Bulletin board			
			Furniture linoleum			

For more information on any of the collections shown on this page, please visit www.forbo-flooring.co.uk

IMPROVING FACILITIES SERVICES ACROSS THE PUBLIC SECTOR

In order to ensure that we are focussing our efforts in the correct areas to help our public sector clients achieve their objectives, we conducted an iGov Survey in partnership with SPS and Forbo Flooring Systems. The project ran from January to March 2019 and included many central government and Non-Departmental Public Bodies including DEFRA, MoD, Ministry of Justice and the Health and Safety Executive.

There was no inducement to take part in the survey, and Forbo Flooring Systems was not introduced as a survey partner.

Here are some of the key findings of the report.



THE SOLUTION: **MARMOLEUM**

Forbo's Marmoleum is made from 94-98% natural raw materials and is produced CO₂ neutral. So it's no surprise that it is the world's leading sustainable resilient flooring.

For more information on **Forbo's sustainability solutions** visit page 10.



THE SOLUTION: **CORAL + NUWAY + STEP**

The first step towards protecting your building and minimising slip risks can be taken by installing Coral + Nuway entrance flooring systems. Our Step range offers a genuine HSE compliant safety floor.

For more information on **how to keep employees safe and sound**, see pages 12.



THE SOLUTION: **INFORMED DESIGN**

We understand the importance of employee health and wellbeing and have developed a number of tools to help you design productive workspaces.

For more information on **Forbo's solutions** visit pages 8-9.



THE SOLUTION: **FAST FIT**

The Fast Fit collection by Forbo is the perfect product range to to reduce service disruption and increase the speed of installation.

For more information on **Fast Fit** see page 11.

To download the full independent report, please visit www.forbo-flooring.co.uk/government

EMPLOYEE AND VISITORS HEALTH AND WELLBEING

We understand the importance of employee health and wellbeing and our product portfolio is designed with these two factors in mind. A high standard of employee comfort and wellbeing means optimised productivity. Read below to see how our floor coverings can contribute towards high performance office environments that maximise employee satisfaction.

Absenteeism cost the UK £18 billion in 2017

The UK can expect to pay up to £8.4 billion per annum for mental-health related absences alone. Office design directly impacts on both the mental and physical health and wellbeing of employees. Read our 'How the Design of the Workplace Influences Well-being and Productivity' whitepaper to explore the latest research and analysis in commercial office design.

www.forbo-flooring.co.uk/offices



Allergy UK Approved Flooring

Our Flotex flocked flooring and Marmoleum linoleum floor coverings have the prestigious Allergy UK Seal of Approval™, as with the correct cleaning and maintenance regime, they won't harbour dust mites or allergens, contributing to better indoor air quality and enhanced comfort for employees and visitors.



Work Fever Report

Currently, the UK is one of the top three countries in the world for the highest instances of allergy with over 21 million adults suffering from some kind of allergic reaction. One of the common causes of asthma and allergies is the exposure to dust mites in soft furnishings and carpets.

The survey revealed that office cleaning is infrequent and does not appear adequate enough to prevent the build up of house dust mites and allergens, with 37% reporting their office is cleaned just once a week or less. With 20% of respondents spending eight hours or more at work, the combination of visibly dusty and cluttered desks, soft furnishings, poorly vacuumed carpets and a lack of ventilation is not conducive to a healthy working environment.

To download the report, visit www.forbo-flooring.co.uk/offices



DSDC accredited flooring age inclusive design and Forbo Flooring

As age-related changes and impairments can often make it more difficult for people to understand and navigate a building, Forbo Flooring Systems has partnered with The University of Stirling's Dementia Services Development Centre (DSDC) to review over 1000 floor finishes; assessing their suitability for use in dementia-friendly environments.



DSDC is an international centre of knowledge and expertise dedicated to improving the lives of people with dementia. They have drawn on research and practice from across the world, for over 25 years, to provide a comprehensive, up-to-date resource on all aspects of dementia.

The DSDC Accredited product logo is awarded on the merit of the individual product and colourway. This accreditation does not merit the final application. For an environment to be considered 'dementia-inclusive' or 'dementia-friendly', careful consideration must be given to the specification of adjoining finishes, their performance specification, for example, light reflectance value (LRV), slip resistance and use of pattern, and their suitability for their intended use.

To find out more and download our handy 'Do's and Don'ts' guide, please visit www.forbo-flooring.co.uk/designingfordementia



SUSTAINABILITY

Creating Better Environments

From how they're made to how they perform, we make outstanding floors that are truly sustainable. That's because our floors are good for people, good for buildings and good for the environment. So, from the building they're in to the world outside, we're helping our customers work, live and relax in better environments.

It's about the things you can't see

A Forbo floor is always beautiful and stylish to look at. A floor that's comfortable to live, work and play on. But looks aren't everything; often, it's the things you can't see that really matter.

From how it's made, our footprint...

From how we run our factories to how we choose our ingredients, the way we make our floors is a big part of how we meet our mission to create better environments.

...To how it performs, Your footsteps...

We include the whole life of a floor when we think about its sustainability performance. Which means we make sure our floors start performing from the moment they're fitted.

www.forbo-flooring.co.uk/cbe

Green information

We provide environmental data sheets for our products which are available online. Please visit www.forbo-flooring.co.uk/cbedownloads to download them.

Social accountability

As well as reducing our impact on the planet, we're also working on caring for the people that touch our business, from employees to suppliers. That's why all our UK manufacturing facilities and most of our sites in Europe **are certified to OHSAS 18001 – Occupational Health and Safety and SA8000®**. The SA8000 Standard, established by SAI and one of the world's pre-eminent social standards, is a tool for implementing international labour standards to protect workers along each step of the supply chain.



Save a Sample

At Forbo we strive to provide sustainable integrated flooring solutions in the most environmentally responsible manner. We invite customers to return their sample to us free of charge so we can recycle or reuse them, reducing the need for virgin sampling and avoiding landfill.

Back to the Floor

Forbo can arrange for the collection of clean installation off-cuts for recycling or processing, avoiding landfill.



MARMOLEUM, CO₂ NEUTRAL, NATURALLY

We're pleased to announce that our Marmoleum 2.5mm sheet is independently EPD confirmed as CO₂ neutral (cradle to gate) without the need for carbon offsetting.

In simple terms, the CO₂ produced in the extraction, transportation and manufacturing process of Marmoleum is balanced by the removal of CO₂ through the growing of its natural ingredients such as flax, jute and rosin.

As we all now consider how to make more conscious decisions when it comes to selecting building and interior materials, we wanted to make Marmoleum count towards helping to reduce the embodied carbon of future and refurbished buildings.

For more information please visit:

www.forbo-flooring.co.uk/co2



MINIMISE SERVICE DISRUPTION GENUINE ADHESIVE FREE PRODUCTS

As the majority of our survey respondents face challenging budgets, it's vital we offer products which meet the clients budget requirements and minimise downtime. Fast Fit is Forbo's collection of genuinely adhesive free products including entrance products and interior flooring ranges in sheet, tile and plank format for maximum flexibility.



- The speed of installation can reduce downtime by over 50% which is crucial in a 24 hour environment
- Floors can be used straight after installation so there's no need to wait 48 hours after installation before using heavy traffic
- If the existing sub floor is suitable, the installation of Fast Fit products can be quiet reducing disruption to staff and visitors
- None of the constraints associated with adhesives such as drying time and lingering odours improving well-being for staff and visitors
- As the products are adhesive free, they can be easily uplifted and reused in another area

THE FAST FIT RANGE

- coral® click** Entrance matting
- modul'up** Adhesive free sheet vinyl
- allura click pro** LVT planks/tiles
- allura ease** LVT planks/tiles
- allura puzzle** LVT tiles
- allura colour plus** LVT tiles
- colorex® plus** Homogeneous tiles

KEEPING EMPLOYEES AND VISITORS SAFE AND SOUND

Entrance system products

Do employees or visitors slow down or stop to wipe their feet when they walk into your buildings? Chances are that they don't, which is why it's important to keep the world outside, outside. By keeping out dirt and moisture at the entrance, cleaning costs can be cut by up to 65%, interior floors protected and the potential for slipping greatly reduced.

With our Nuway and Coral ranges, Forbo offers both rigid and textile entrance matting solutions.

www.forbo-flooring.co.uk/EFS



Step safety flooring

By choosing a Forbo safety floor the number of accidents caused by slipping can be reduced significantly. Our Step safety vinyl floor coverings have guaranteed life time slip resistant performance and offer safety solutions for a wide range of applications.

Varying from R10 slip resistance (Surestep) to R11 & R12 (Safestep) for areas where higher slip risk is identified, like professional kitchens, wetrooms and workshops, there is a Step range to suit all requirements.

www.forbo-flooring.co.uk/step

Fast Fit

Fast Fit is Forbo's collection of genuinely adhesive free products. As they don't require adhesives, there are no lingering aromatics from the flooring installation. The Fast Fit collection is available in sheet, tile and plank formats for maximum flexibility.

www.forbo-flooring.co.uk/fastfit

FASTFIT 
Rapid, reusable flooring



REASONS TO CHOOSE PROCURE 22 CONSTRUCTION PROCUREMENT FRAMEWORK



Introduction

In addition to being on the Crown Commercial Services Framework RM3837, Forbo also is on the ProCure 22 framework. Not sure if Procure 22 is for you? Please read on to discover the benefits of utilising this Framework agreement and what Forbo as an approved supplier can offer you.

Overview

ProCure22 (P22) is a Construction Procurement Framework administrated by the Department of Health (DH) for the development and delivery of NHS and Social Care capital schemes in England.

It is consistent with the requirements of Government Policy including the Productivity and Efficiency agenda; the Government Construction Strategy; the Public Contracts Regulations 2015; the National Audit Office guidance on use of centralised frameworks; and the Cabinet Office Common Minimum Standards for procurement of the Built Environment in the Public Sector.

Why use the Procure 22

The P22 process builds on the benefits and success of previous frameworks (P20/P21/P21+) while satisfying the core objective of delivering improved value for money in Health and social care capital developments. It reduces your exposure to risk and each scheme will have a start-up workshop provided by the appointed Principal supply chain Partner (PscP).

Benefits of working with Forbo under ProCure 22 Framework

- Open and honest recommendations for the best floor covering, or combination of products, to meet your requirements
- Savings through transparent trading and aggregation of demand
- We are recognised as a trusted partner and can supply total solutions for every area in every type of healthcare building
- The personal touch with your own area manager to assist in any specifications or advice

Flooring products available from Forbo via Procure 22 Framework

- Entrance Systems
- Linoleum
- Safety flooring
- Acoustic flooring
- Textile flooring
- Static control flooring
- Forbo's Fast Fit collection

For further information on Forbo and ProCure 22

www.forbo-flooring.co.uk/healthcare



BIM – CREATING A DIGITAL BUILT BRITAIN

Business Information Modelling (BIM) is a very broad term that describes the process of creating and managing digital information about a building. **Level 2 BIM has been required on centrally funded government projects since April 2016.** Level 3 is expected to come to the market in 2020/21.

www.gov.uk/governmentpublications/government-construction-strategy-2016-2020

Aside from the obvious benefits, increasing the speed of project delivery and bringing cost efficiencies throughout the design process, most BIM users also believe that it improves their productivity due to the easy retrieval of information that is held within the model itself.



BIM Models

As an early adopter of BIM modelling, Forbo now has a comprehensive offering of high-quality BIM models across our floor covering portfolio, all designed to provide key technical data as well as our green building properties and installation information. From Coral and Nuway entrance systems to Tessera carpet tiles and Allura luxury vinyl tiles, our full portfolio of BIM models are free to download across a number of platforms – **BIM store, National BIM Library and BIM Object.**

To download BIM models directly from our website or to find links to our BIM suppliers' websites, visit www.forbo-flooring.co.uk/BIM

BIM Video

Our online step-by-step guide will show you how to use Forbo BIM models to create the perfect interiors.

www.forbo-flooring.co.uk/BIM

FLOORS THAT **WORK TOGETHER**

As Forbo offers the most comprehensive range of floor coverings in the UK, you can rely on us to advise you openly and honestly on the optimum combination of products to meet your flooring requirements.

With many public sector buildings being used by employees and local communities, flooring has to be multi-functional yet still provide an integrated and cohesive design across the estate.

Visit www.forbo-flooring.co.uk/perfectwith to see examples of how customers have used our integrated flooring offer. If you want to 'Get the look,' simply order a sample pack of the products used to get you started.

PERFECT *with* #GetTheLook

coral[®]
PERFECT WITH

nuway[®]

linoleum[®]
PERFECT WITH

tessera[®]

allura flex[®]
PERFECT WITH

flotex[®]

tessera[®]
PERFECT WITH

sphera[®]

allura[®]
PERFECT WITH

marmoleum[®]

allura flex[®]
PERFECT WITH

tessera[®]

step[®]
PERFECT WITH

all floors

Find your perfect Forbo combination.

SMART working

The Government Hubs programme is working to transform the Government Estate. One of the key objectives is increasing staff productivity by enabling efficient and smarter working.

The British Council of Offices has been reviewing the Hubs programme. A key finding is that **'Staff like the different workspaces available at the hubs' with quotes from the staff such as 'We choose the right workspace for each task'**.

Forbo's integrated flooring portfolio is ideal for helping to create these zoned yet cohesive working environments.

For more information on our floor finishes that work together, please visit www.forbo-flooring.co.uk/government



Peaks and Plains Housing Trust

OUR FLOOR COVERINGS IN USE

In March 2018, the size of the central government estate was 7,740,000m². Even though this represents a reduction of 28% over the last 8 years, it's still an enormous and very diverse estate resulting in a broad range of flooring requirements. Over the next few pages, we aim to show how our customers, UK and abroad, have found floor covering solutions within the Forbo portfolio. To see more examples visit www.forbo-flooring.co.uk/inspiration

Forbo's solutions for offices



Urbanest

Products: **Flotex planks**
Student Accommodation company Urbanest installed Flotex Concrete Planks in their new head office for a contemporary and forward-thinking space that encourages flexibility and collaborative working.

Zebra Technologies

Products: **Tessera carpet tiles, Allura Flex**
Design and Build firm, Oktra recently specified a mix of Forbo Flooring Systems' Tessera carpet tiles and Allura Flex Luxury Vinyl Tiles (LVT) for the refurbishment of Zebra Technologies' new office space.



Energy Systems Catapult

Products: **Marmoleum Modular**
The Midlands based Energy Systems Catapult, decided to practice what it preaches when specifying the flooring in its new office facility in Birmingham City Centre. Opting for Forbo Flooring Systems' Marmoleum Modular Lines due to its excellent green credentials and high-end aesthetics, the office subsequently went on to win the BCO 2017 regional award in the Fit Out of Workspace category.

FORBO'S SOLUTIONS FOR EDUCATION



University of Winchester – Physiotherapy Centre

Products: **Surestep Original**
Combining exceptional slip resistance with contemporary aesthetics, Forbo Flooring Systems' **Step safety vinyl** collection has helped to define and enhance the practical teaching space within the new state-of-the-art Physiotherapy Centre at the University of Winchester.

Coleg Cambria

Products: **Tessera carpet tiles, Eternal vinyl**
Deeside Sixth, a joint development between Coleg Cambria, local schools and Flintshire County Council, is a £14.6 million state-of-the-art centre, which provides a learning environment to offer enhanced curriculum options to A Level students.



Croxteth Primary School

Products: **Tessera carpet tiles, Eternal vinyl, Step safety vinyl**
Forbo Flooring System's impressive integrated product portfolio has helped 2020 Liverpool create a stimulating and inspiring environment for the pupils at Croxteth Community Primary School, where the flooring has been used as a key design element.

FORBO'S SOLUTIONS **FOR MUSEUMS**



Estonian Museum of Natural History

Products: **Eternal bespoke**

The Estonian Museum of Natural History created a new permanent exhibition called "Estonian Bogs" to introduce different types of bogs. The digitally printed Eternal floor creates a visual experience of walking on the bog. Different types of bogs mesh seamlessly into one another on the floor and intensify the experience for the visitors.

Titanic Belfast

Product: **Nuway Grid**

One hundred years after the birth of the world's most famous ship, the Titanic Belfast has become a major tourist attraction for Northern Ireland. Nuway Grid with Coral infills was installed at the main entrance and exit areas to remove the worst of the dirt and moisture being tracked into the building.



Unesco Biosphere Reserve Vessertal

Products: **Marmoleum, Eternal digital print**

FORBO'S SOLUTIONS **FOR LIBRARIES**



The Glucksman Library at the University of Limerick

Products: **Tessera, Marmoleum, Step, Allura**

The Glucksman Library at the University of Limerick is one of the biggest campus libraries in Ireland and one of the most digitally advanced in the world. The 30 million project includes a 7,600sqm extension and new facilities that offer students advanced computing, collaboration and communication spaces. Creating an area where speech can be heard clearly in busy areas and protecting other neighbouring quiet spaces from intrusive noise was bound to be a challenge.

Edmonton Green Library

Product: **Eternal Colour rainbow**



Chungnam Library

Product: **Flotex tiles**



Donabate Library

Products: **Tessera carpet tiles, Marmoleum, Sarlon acoustic vinyl**

FORBO'S SOLUTIONS FOR LABORATORIES & CLEAN ROOMS



BRAINLAB Munich
Product: **Colorex, Eternal**

The headquarters of Brainlab is located in Munich, Germany. Brainlab is a software-company that specialises in applications for the medical sector. Two colours of Colorex SD flooring have been used in the main areas. In the corridors and reception area Eternal digitally printed vinyl has been installed.

RENEX Electronics
Product: **Colorex EC plus**



Unisensor Laboratories
Products: **Sphera Element, Colorex SD static control flooring**

FORBO'S 'OFF THE FLOOR' SOLUTIONS



Egedal Town Hall
Product: **Furniture Linoleum**

The Egedal Town Hall is designed for administrative environments in open offices. The inherent risk of noise was solved by applying Furniture Linoleum on the desks, as it has acoustic reduction properties.

"Desktop linoleum is an excellent material with a soft surface that really helps to reduce extraneous noise. On top of that it's antibacterial." Rikke Holm, Interior architect, H+ ARKITEKTER.

True Self Exhibition
Product: **Furniture Linoleum**

True Self exhibition: Faced with a small budget and the durability demands of two years of touring, a simple and inventive exhibition system was created that easily assembles and disassembles for moving across nine venues. Furniture Linoleum was the key material used in the exhibition design, used for seating, monitor framing and signage.



Artevelde Hogeschool
Product: **Marmoleum Bulletin Board**

FURTHER INFORMATION

More information

For more information about our commercial floor covering solutions for the public sector, visit: www.forbo-flooring.co.uk/government

Head to www.forbo-flooring.co.uk/inspiration to see our latest case studies and use the product selector tool designed to help you find exactly what you're looking for. You can also see our floor coverings in situ using our virtual floor planner.

Samples

Forbo offer a quick and free sample service to help you in your decision process. Call **0800 731 2369** or email samples.uk@forbo.com



Any questions

If you would like to speak to one of our dedicated key account managers to discuss your project and flooring needs further, simply visit www.forbo-flooring.co.uk/government and fill in our online form and someone will be in touch with you.



Marmoleum Modular **t2713** | calico + **t3352** | Berlin red



Tessera Cloudscape **3401** | light airs + 3402 | ocean winds



Surestep Wood **18962** | whitewash oak

NEXT STEPS

To find out more about the Crown Commercial Service framework for Flooring, please visit ccs-agreements.cabinetoffice.gov.uk

Forbo Flooring Systems products are also listed on the following frameworks:

- Public Sector National Flooring Supplies Framework
- Crescent Purchasing Consortium
- North West Universities Consortium



As this list is regularly being added to, please visit www.forbo-flooring.co.uk/government for the latest details.

For further information on any of the products in this brochure, please don't hesitate to contact us on the number below and we'll be pleased to send you additional literature and samples as required.

Samples:
0800 731 2369 or online at www.forbo-flooring.co.uk
samples.uk@forbo.com

Email:
info.governmentspace.uk@forbo.com

Downloads & CPDs:
www.forbo-flooring.co.uk/downloads
www.forbo-flooring.co.uk/CPD

Whilst Forbo Flooring UK Limited does its best to ensure that the contents of this brochure are correct and accurate at the time of publication, to the fullest extent permitted by law, Forbo Flooring UK Limited makes no, and expressly disclaims all, guarantees of any kind, express or implied in respect of the information, content, materials or products displayed in this brochure and does not represent that the information is accurate, complete or current and you are advised to visit our website at www.forbo-flooring.co.uk for up-to-date details or corrections to such contents.

Please note: Digital representations may vary from the actual product. Please order a sample to see the full effect. Contact 0800 731 2369.



London EC1 Showroom:
79 St John Street,
Clerkenwell
London, EC1M 4NR
Tel: 0207 553 9300
Email: ec1@forbo.com
Opening hours:
Mon – Fri 9.00am - 4.00pm

Forbo's EC1 showroom is the ideal place to visit when you're looking for that 'perfect colour' or just want to see a wider range of products.

Our full portfolio of brands on display includes Tessera carpet tiles, Marmoleum, project vinyl ranges, entrance flooring systems and designs from our Flotex collection.

Why not pop in and enjoy some hospitality while looking at the products or discussing a project with one of our advisors.





Forbo Flooring Systems is part of the Forbo Group, a global leader in flooring and movement systems, and offers a full range of flooring products for commercial and affordable housing and new build markets. High quality linoleum, vinyl, textile, flocced and entrance flooring products combine functionality, colour and design, offering total flooring solutions for any environment.

UK

Forbo Flooring UK Limited
High Holborn Road
Ripley
Derbyshire DE5 3NT

London EC1 showroom

79 St John Street, Clerkenwell
London EC1M 4NR
Tel: 0207 553 9300

For commercial enquiries:

If calling from the North,
London & South East
Tel: 0800 0282 162
Fax: 01772 646 912
bcs.flooring.uk@forbo.com

If calling from Scotland,
Midlands & South West
Tel: 0800 0935 258
Fax: 01592 643 999
kcs.flooring.uk@forbo.com

Nuway enquiries:

Tel: 01773 740 688
Fax: 01773 740 640
efs.flooring.uk@forbo.com

Residential enquiries:

Tel: 0800 0935 846
Fax: 01592 643 999
krccs.flooring.uk@forbo.com
www.forbo-flooring.co.uk

Sample orders:

Tel: 0800 731 2369
Fax: 0843 319 1831
samples.uk@forbo.com

Ireland

Forbo Ireland Ltd
2 Deansgrange Business Park
Blackrock
Co Dublin

Tel: 00353 1 2898 898
Fax: 00353 1 2898 177
info.ireland@forbo.com
www.forbo-flooring.ie

Registered office:

Forbo Flooring UK Limited
High Holborn Road
Ripley
Derbyshire DE5 3NT
Registered in England 9200318